



Power Sector Reforms

- Implementation Highlights -

E-Power Mo
Grand Xing Imperial Hotel, Iloilo City
9 October 2018

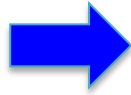


OUTLINE



INTRODUCTION

Pre-EPIRA



EPIRA Regime

Vertically Integrated



Generation



Transmission

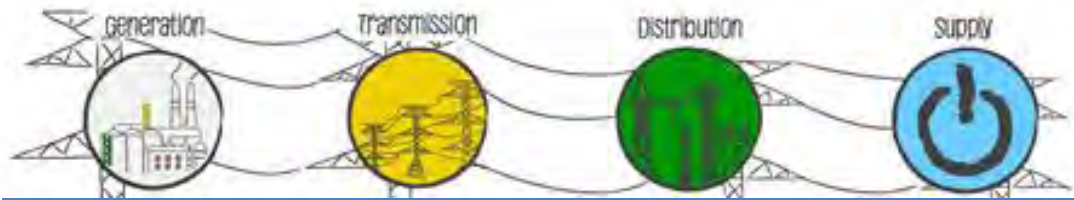


Distribution

- Accelerate electrification
- Quality, reliability, security & affordability of supply
- Transparent and reasonable prices of electricity
- Broaden ownership base of generation, transmission and distribution sectors
- Protect public interest
- Promote utilization of renewable energy
- Privatization of NPC
- Establish Independent Regulatory Body
- Demand Side-management



Horizontally Integrated



Competitive

Regulated

Regulated

Competitive

System Operator

Market Operator



Market Development



Missionary Electrification



Household Electrification



Renewable Energy



Institutional support Mechanisms



INTRODUCTION

Introduce competition



Removal of subsidies



Pay-off power sector debts



Enhance transparency and efficiency



PRIVATIZATION

Status to date...



Transmission assets privatized in 2009



73.8% of total generating capacities privatized



72% of IPP contracts turned over to IPPAs



PRIVATIZATION

PRIVATIZED GENERATION ASSETS & IPP CONTRACTS

As of June 2018

Assets	Total Capacity (MW)	Privatized Assets		
		Capacity (MW)	No. of Plants	Privatization Level
Owned Generating Plants	6,233.53	4,601.43	31	73.82%
IPP Contracts	4,906.27	3,415.00	6	73.53%
Decommissioned Plants	-	-	5	-
Total	11,139.80	8,016.43	42	71.96%

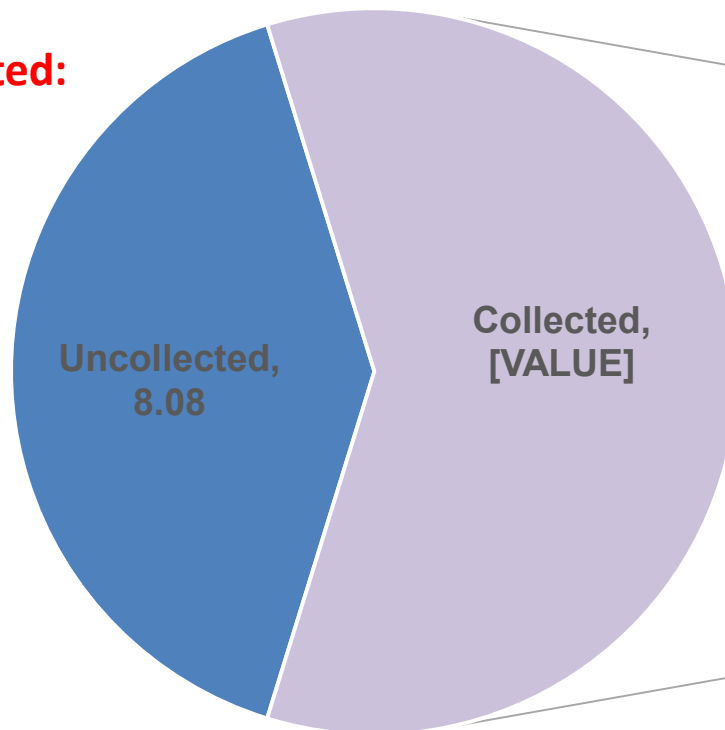
70% privatization is a prerequisite for RCOA



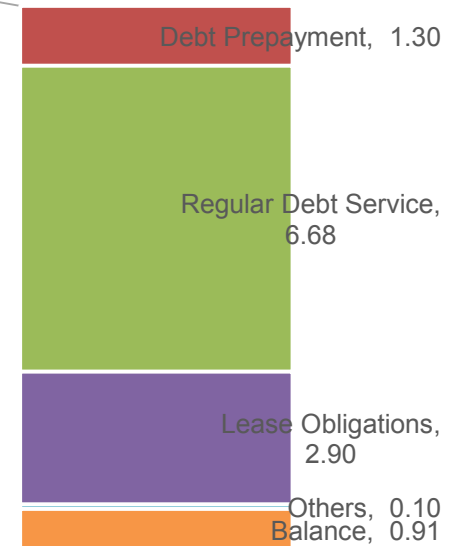
PRIVATIZATION

Proceeds and Utilization as of 1st Quarter 2018

**Amount Generated:
US\$19.97**



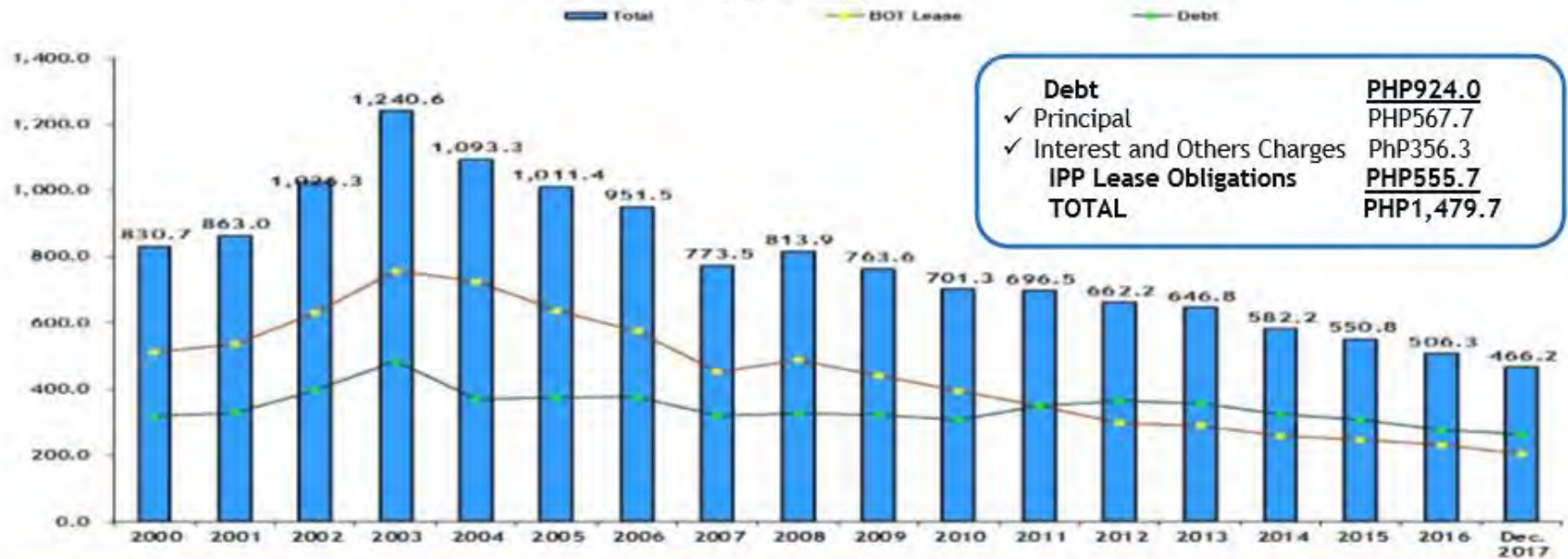
**Amount Utilized:
US\$10.98**



PRIVATIZATION

PSALM Total Debts and IPP Lease Obligations

PSALM's Outstanding Financial Obligations Assumed from NPC
As of 31 December 2017
In PHP Billion



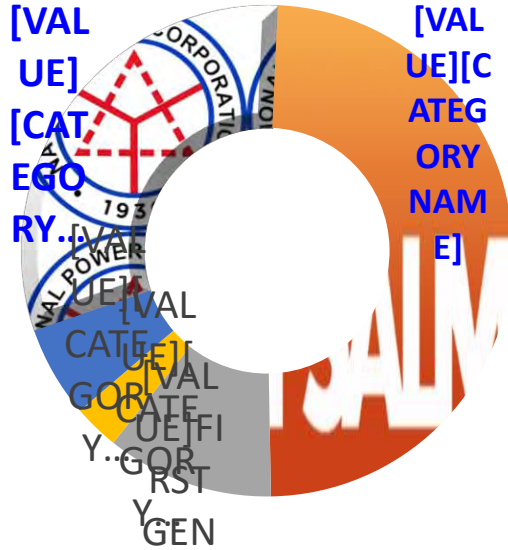
Outstanding Obligations	830.7	863.0	1,026.3	1,240.6	1,093.3	1,011.4	951.5	773.5	813.9	763.6	701.3	696.5	662.2	646.8	582.2	550.8	506.3	466.2
Debts	319.1	327.6	396.0	483.4	368.6	374.4	376.5	320.4	326.0	322.0	307.0	348.1	364.7	357.1	324.0	305.4	275.4	263.3
IPP Lease Obligations	511.6	535.4	630.4	757.2	724.7	637.1	575.0	453.1	487.9	441.5	394.2	348.4	297.4	289.7	258.2	245.4	230.9	202.9



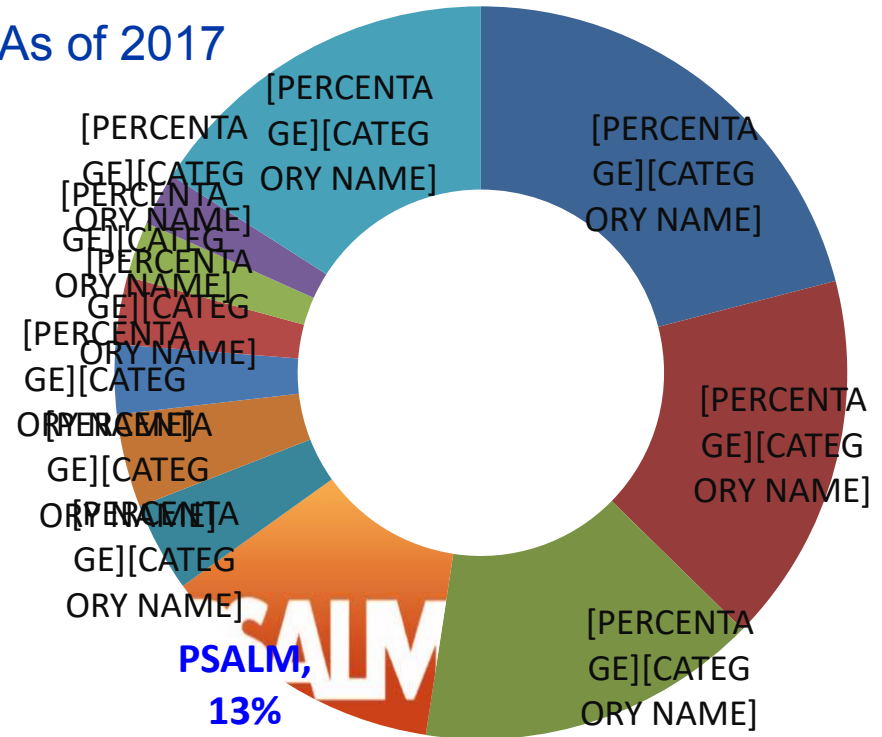
PRIVATIZATION

levelling the playing field...

Before Privatization



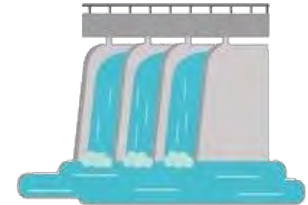
As of 2017



PRIVATIZATION

Indicative Schedule of Generation Assets

March 2018



Asset Type/ Plant Name	Rated Capacity (MW)	Bid Date	Turnover Date
Owned Generating Plants			
Malaya Thermal	650.00	2018	
Agus 1 & 2 Hydro	260.00	For Rehabilitation; under Study Privatization is subject to consultation with Congress and PSALM Board's policy direction	
Agus 4 & 5 Hydro	213.10		
Agus 6 & 7 Hydro	254.00		
Pulangui Hydro	255.00		
Decommissioned Plants			
Bataan Thermal	175.00	Sale/disposal is subject to resolution of court cases involving the asset	
Bataan Gas Turbines	120.00		



PRIVATIZATION

Indicative Schedule for Appointment of IPPAs

March 2018



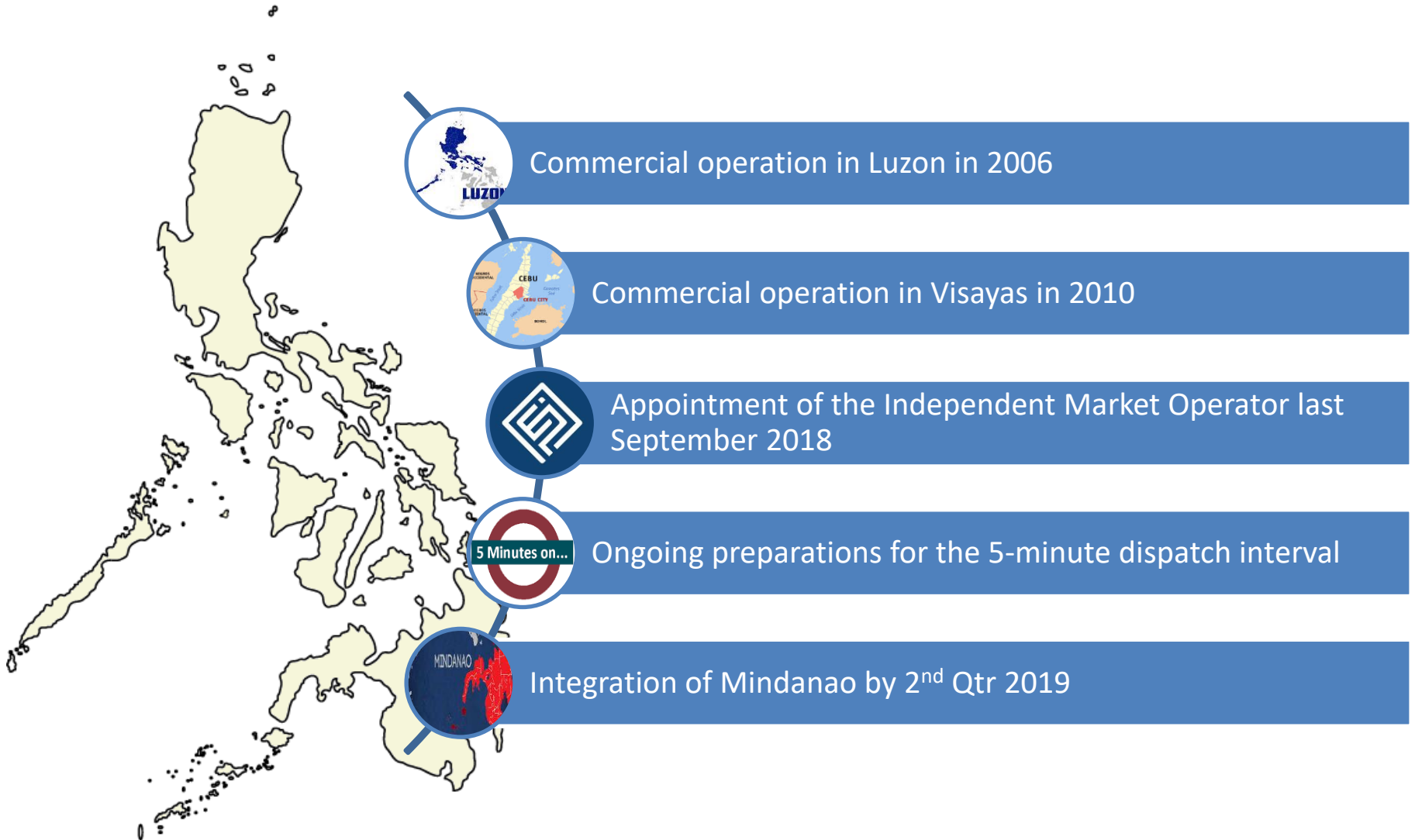
Grid	Plant Name	Contracted Capacity (MW)	Bid Date	Turnover Date
Luzon Grid	Casecnan Multi-Purpose Hydro	140.00		2019
	Benguet Mini Hydro ^{1/}	30.75		IPP contract expired on 30 January 2018
	Caliraya-Botocan-Kalayaan Hydro	728.00		2019
	Sub-total Luzon	898.75		
Visayas Grid	Unified Leyte - Bulk Energy	160.00*		Will operate until contract expiration in 2022
	- Security Strip	40.00		
	Sub-total Visayas	200.00		
	Mindanao Coal-Fired	200.00		2018
	Sub-total Mindanao	250.00		
	GRAND TOTAL	1,298.75		

^{1/} IPP contract not subject to privatization/asset sale

* Based on the average daily declared capability by the Energy Development Corporation (EDC) of about 400 MW less the 200 MW sum of Strips of Energy and 40 MW security capacity of PSALM.



WHOLESALE ELECTRICITY SPOT MARKET



WHOLESALE ELECTRICITY SPOT MARKET

WESM Participants

CATEGORY	REGISTERED						
	TOTAL	DIRECT			INDIRECT		
		LUZ	VIS	LUZ/VIS	LUZ	VIS	LUZ/VIS
Generation Companies	114	75	35	3	1	0	0
Customers							
• Private distribution utilities & Local government utilities	17	8	4	0	5	0	0
• Electric cooperatives	71	29	28	0	14	0	0
• Directly Connected Customers	58	8	6	1	33	8	2
• Wholesale aggregators	4	0	0	4	0	0	0
Total Customer Trading Participants	150	45	38	5	52	8	2
TOTAL PARTICIPANTS	264	120	73	8	53	8	2

Source: PEMC, as of June 2018



WHOLESALE ELECTRICITY SPOT MARKET

WESM Design

Policy

Key developments

New WESM design

- From 1-hour to 5-minutes dispatch interval
- NMMS development
- Reserve Market

RE Law

- Preferential treatment of VRE and FIT-eligible biomass
- RE Market



The image shows a screenshot of the Philippine Electricity Market Corporation (PEMCO) NMMS (New Market Monitoring System) interface. The interface displays various market data, including a table with columns for 'Start Time', 'End Time', and 'Address'. A large graphic overlay on the right side of the screenshot reads 'NMMS LIVE PARALLEL OPERATIONS IS ONGOING' in bold white and yellow text.



WHOLESALE ELECTRICITY SPOT MARKET

INDEPENDENT MARKET OPERATOR



Elected 15 new board members including 11 sectoral representatives during PEMC's Annual General Membership



Independent Electricity Market Operator of the Philippines (IEMOP) assumed market operations functions last 26 September 2018



WHOLESALE ELECTRICITY SPOT MARKET

WESM Mindanao

1st Half of 2019



WHOLESALE ELECTRICITY SPOT MARKET

WESM Mindanao

Ongoing Registration



Registration to the WESM in Mindanao is being facilitated through the new online system (crss.wesm.ph) since 28 February 2018

Overall



80% $\frac{68}{85}$

Grid Generators

100% $\frac{12}{12}$

Embedded Generators

68% $\frac{19}{28}$

Electric Cooperatives

96% $\frac{27}{28}$

Private Distribution Utilities

100% $\frac{4}{4}$

Directly Connected Customers

46% $\frac{6}{13}$



RETAIL COMPETITION AND OPEN ACCESS



ERC declared completion of pre-conditions on June 6, 2011



Initial commercial operation for 1MW CCs on 26 June 2013



750 kW CCs voluntary participation allowed on 26 June 2016



500 kW CCs voluntary participation allowed on 26 June 2018



Aggregation by December 2018



RETAIL COMPETITION AND OPEN ACCESS

RCOA Participants

Membership Category		Expected*			Registered**		
		Jun 2013	Jun 2018	Increase	Jun 2013	Jun 2018	Increase
Contestable Customers	D>1MW	892	1,247	40%	239	932	290%
	750kW≤D<1MW	0	510	-	0	172	-
	Govnt Entity	-	87	-	-	-	-
	<i>Total</i>	892	1,844	107%	239	1104	362%
Suppliers	RES	19	30	58%	15	30	100%
	LRES	13	25	92%	3	13	333%
	<i>Total</i>	32	55	72%	18	43	139%
SOLR		9	44	389%	0	24	-
RMSP		28	46	61%	18	46	156%
Grand Total		961	1,989	107%	275	1,217	343%


Source: *ERC **PEMC;

D – Monthly Average Peak Demand



RETAIL COMPETITION AND OPEN ACCESS

Supply Sector

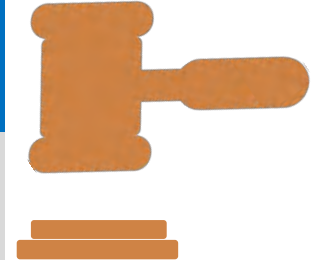


	Licensed/ Authorized by ERC	Registered under CRB
RES	30	30
LRES	25	13
SoLR	44	24

RES - Retail Electricity Suppliers
LRES - Local RES
SoLR - Supplier of Last Resort
CRB - Central Registration Body

TEMPORARY RESTRAINING ORDER

- Licensing of Retail Electricity Suppliers



Policies for the Retail Electricity Suppliers

DC2017-12-0014

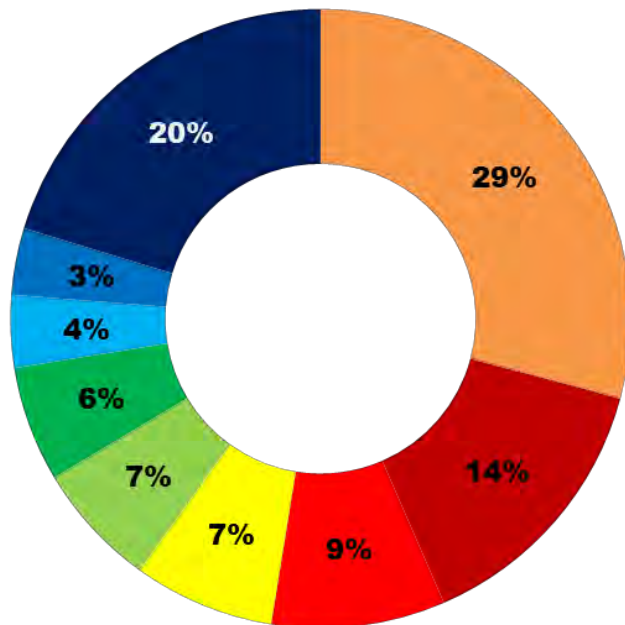
- Distribution Utilities as Local Retail Electricity Suppliers



RETAIL COMPETITION AND OPEN ACCESS

Contestable Customers

As of June 2018
Registered CC per Supplier



MPOWER AESI SMELC
ADVENT PHINMA AC ENERGY
EPMI DPSI 22 OTHERS

1,217
Registered Participants
↑ 360% growth from start of COP



164
Total Switch from start of COP
An average of 2.7 customer switch per month



Policies for the Contestable Customers

DC2017-12-0013

- Voluntary participation of 750kW and above Contestable Customers



TOTAL ELECTRIFICATION

Status as of 31 December 2017



LUZON

94.8%
Households

VISAYAS

88.2%
Households

MINDANAO

70.8%
Households

- 20.936 Million Households have electricity out of 23.716 Million Households in the country

Based on DDP 2018-2027 by DUs

Distribution Utilities (in Millions HH)	HH Population	Served HH	Unserved HH	HH Electrification Level (%)
119 Electric Cooperatives	14.59	12.19	2.39	83.6%
MERALCO	6.98	6.82	0.16	97.7%
Other Distribution Utilities	2.14	1.92	0.22	89.07%
Philippines	23.72	20.94	2.78	88.3%

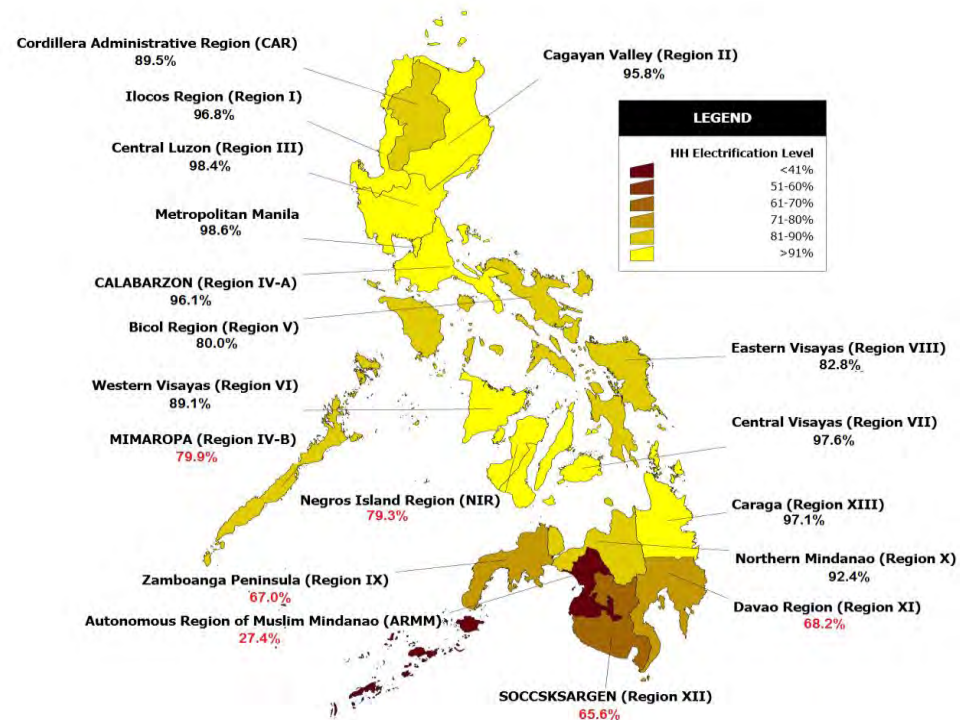


TOTAL ELECTRIFICATION

Status as of 31 December 2017

Region	Total HH*	Served HH	Unserved HH	HH Elect'n Level %
CAR	409,100	365,999	43,101	89.5%
I	1,179,133	1,141,887	37,246	96.8%
II	795,800	762,314	33,486	95.8%
III	2,793,456	2,748,334	45,122	98.4%
IV-A	3,718,758	3,572,657	146,101	96.1%
IV-B	708,077	566,065	142,012	79.9%
NCR	3,233,605	3,189,357	44,248	98.6%
V	1,197,558	957,954	239,604	80.0%
Luzon	14,035,487	13,304,568	730,920	94.8%
VI	1,019,375	908,244	111,131	89.1%
VII	1,426,286	1,391,344	34,942	97.6%
VIII	1,003,543	831,235	172,308	82.8%
NIR	1,016,400	806,494	209,906	79.3%
Visayas	4,465,604	3,937,317	528,287	88.2%
ARMM	618,600	169,190	449,410	27.4%
CARAGA	633,700	615,515	18,185	97.1%
IX	754,300	505,444	248,856	67.0%
X	1,004,722	927,878	76,844	92.4%
XI	1,177,596	803,588	374,008	68.2%
XII	1,026,019	672,999	353,020	65.6%
Mindanao	5,214,937	3,694,614	1,520,323	70.8%
Philippines	23,716,028	20,936,499	2,779,530	88.3%

Note: Red texts indicate electrification level below 80%



Source: DOE (Initial Estimate)



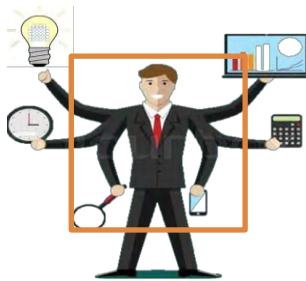
SUPPORT MECHANISM

Universal Charge for
Missionary Electrification



Consumer
Education

CSP, Lower SLC, KPI,
Performance Audit



Lifeline Rate



Rate reduction thru
related business



ER 1-94



WAY FORWARD

Amend Implementing Rules and Regulations

- Align DOE, ERC and AAs mandates for ensuring quality, reliability and security of the supply of electric power
- Rationalization of subsidies (UCME, lifeline rate)
- Enhance provision on competition and cross-ownership provision
- Clarification and strengthening of unbundling provisions
- Timely regulation
- Transmission service expansion to missionary areas
- Emphasize electric power industry participants' compliance to performance standards pursuant to PDC, PGC, WESM Rules and other relevant DOE and ERC regulations
- Rate reduction thru related business





Thank You!



(+632) 840-1773



Ningski_baltazar@gmail.com



www.doe.gov.ph



<https://web.facebook.com/doe.gov.ph>



@doe_ph

